

Trike

PITCHMARKING MACHINE

INSTRUCTION MANUAL
& SPARE PARTS LIST



Bowcom™

ADVANCED SPORTS LINE MARKING

www.bowcom.com
t: +44 (0) 29 2038 8349

TRIKE – INSTRUCTIONS FOR USE

- 1) Ensure Trike engine has oil in engine & clutch (mineral or semi-synthetic) + petrol (un-leaded). **Never:** run engine without oil, it will seize within a few revolutions.
- 2) Before spraying paint, ensure the trike pump has been bled:- **Bleed process.** Place suction tube into water pail / remove the DCV (bleed valve on side of gun housing) / fully close (clock-wise) the 'flow control valve' (on dash-board) / turn on both – pump isolator switch (dash) + handle bar spray switch / run pump to remove all air. When complete, replace DCV & leave water in system / continue to run pump whilst gradually opening the flow control valve. This reduces any 'over-pressure' & allows instant start / stop.
- 3) **Drive Controls:** Accelerator (right pedal) / Brake (left pedal) + incorporates locking park brake. Gear box / clutch (centrifugal) – Automatic. Turn on petrol tap (located above start cord). Insert ignition key & pull-start engine, using full or part choke (located next to petrol tap).
- 4) **Spray Controls:** Ensure handle-bar spray switch is in the 'off' position. Turn 'on' the pump isolator switch on dashboard (check volt meter for 'power-on & battery charge level').
- 5) **Spray-head:** With spray-bar-stub locked into 'box chassis socket', adjust spray head height & line width. (allow spray limit plates to travel approx. 15 mm above ground level). **NB.** When not in use, always stow the spray head in 'rest' position (above chassis bar, near to spray-hose 'plug-in').
- 6) **To spray line:** Fill 25 litre pail (provided) with suitable diluted mix (paint / water) from Bowcom concentrate. Screw on lid with suction tube pushed to bottom of pail. Position 25 litre pail in space provided. Adjust seat position to suit & secure with lock-bolt + ensure 'back-of-rail' safety bolt in place. **NB:** Ensure 'spray direction tap' (on side panel by right knee) is set to 'spray'. Turn on pump isolator switch. Start Trike engine. Drive to start point. Using handle-bar spray switch, spray continuously until water turns to paint. Start to drive with spray switch engaged. Note, spray starts & stops at front of foot plate. Place front wheel centrally over the top of existing line (or beside marker string if new line).
- 7) **Hand-Lance:** To use:- turn spray switch off. Apply ¼ turn of 'spray direction switch' from 'spray' to 'hand-lance'. Re-start pump using spray switch. **NB:** No paint will spray from front spray head. Operate hand-lance spray gun with hand-trigger. **NB:** When not in use, engage the trigger 'lock-off' lever. Hand-Lance can be used whilst sat on Trike or on foot (up to 1 x metre from Trike – [do not over-stretch coil]).
- 8) **Daily Trike Cleaning:** Immediately following use of paint, fully flush spray system with water (using Bowcom 'Multi-flush' solution if preferred). Place steel suction tube into pail of water (min. 10 litre) / place 25 litre paint pail at front of Trike / turn on spray switch / remove complete spray head from lock position & place over 25 litre paint pail / re-engage spray switch, this will fill system with water & re-cycle the paint in the system. Repeat process using hand-lance. In both cases, spray until clear water runs through spray nozzle / remove spray nozzle union nut holder / rinse nozzle & mini 'top-hat' filter with water & replace.

9) Weekly Trike Cleaning: In addition to above, remove & clean out main filter (black PVC, located beside battery). Following this cleaning process, spray head will require re-bleed (as in **2** above). If 'hosing-down' the Trike exterior, take care not to allow water to ingress engine and electrical spray components.

10) Battery Charging: Full battery charge should mark for up to 1 – week (approx. 40 x pitch marks). Re-charge using 240 volt charger supplied, inserting the 12 volt plug into dash-board socket.

Accessories:-

6 x head Chemical spray boom

Running-track guide

Extra pail carrier

Technical Information:-

Paint tank capacity: 25 litres

Weight – Dry, no tank: 140 kg

User: Single operator only

Safety information:-

Trike should only be used by competent trained operator (trained by the manufacturer or their agents). When used in the application of chemicals, all operatives should possess' relevant chemical certification.

Trike is designed for use on flat surface & slight incline only. Do not use on steep slopes to avoid rolling.

When stopped always engage park brake.

Do not leave un-attended with engine running.

Trike is chain driven with full chain protection that must never be removed during operation.

Keep clothing & un-protected body parts clear of all moving parts & engine components.

Do not use on public highway. NOT ROAD REGISTERED.

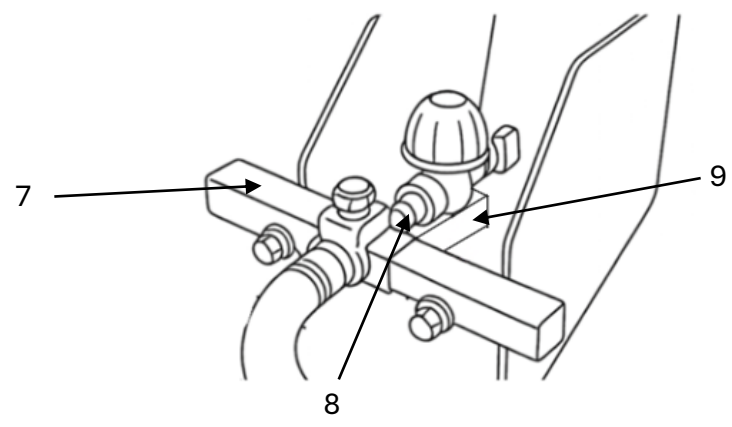
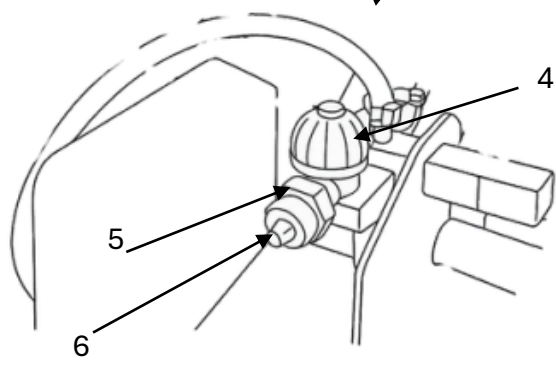
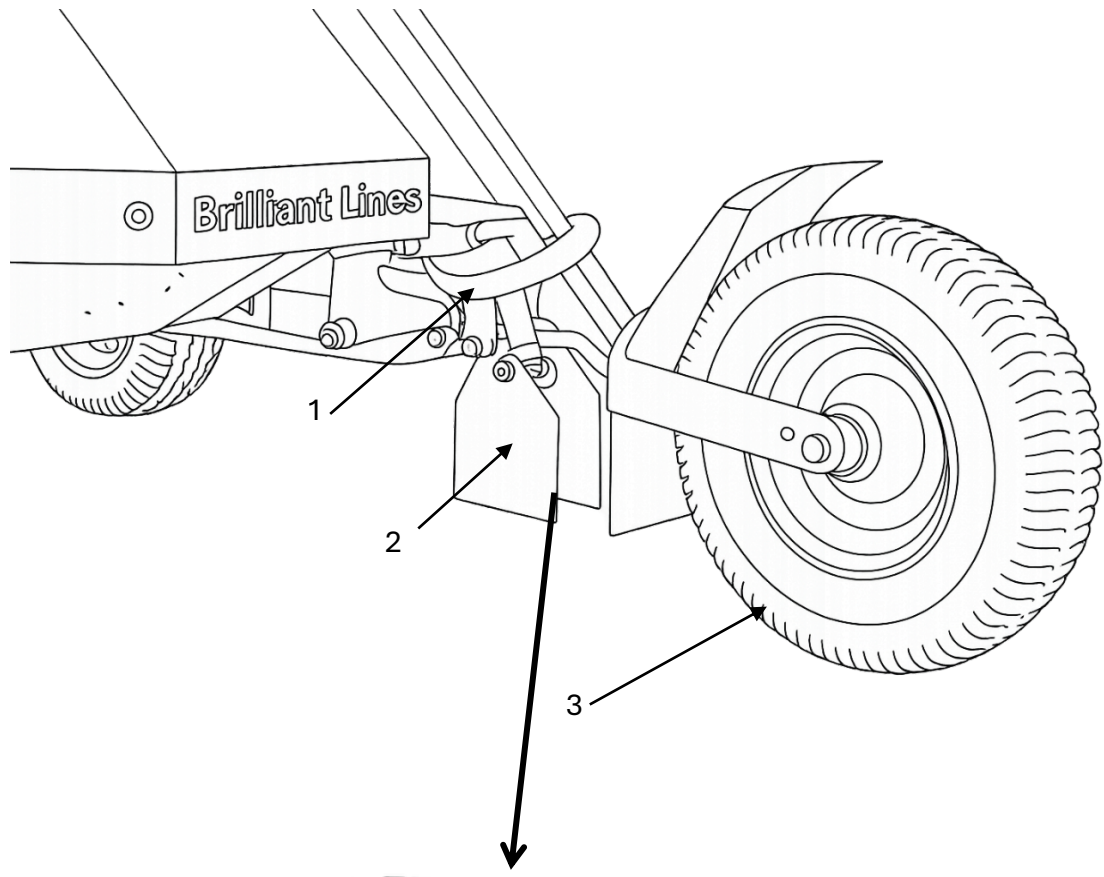
When using Chemical Boom – always fold side-arms up for travel when NOT in use.

- follow certification guidelines for safe use of chemicals.

Keep naked flames & lighted cigarettes clear of petrol tank & observe all usual safety precautions that apply to petrol engines & powered machinery.

For additional information, contact the manufacturer

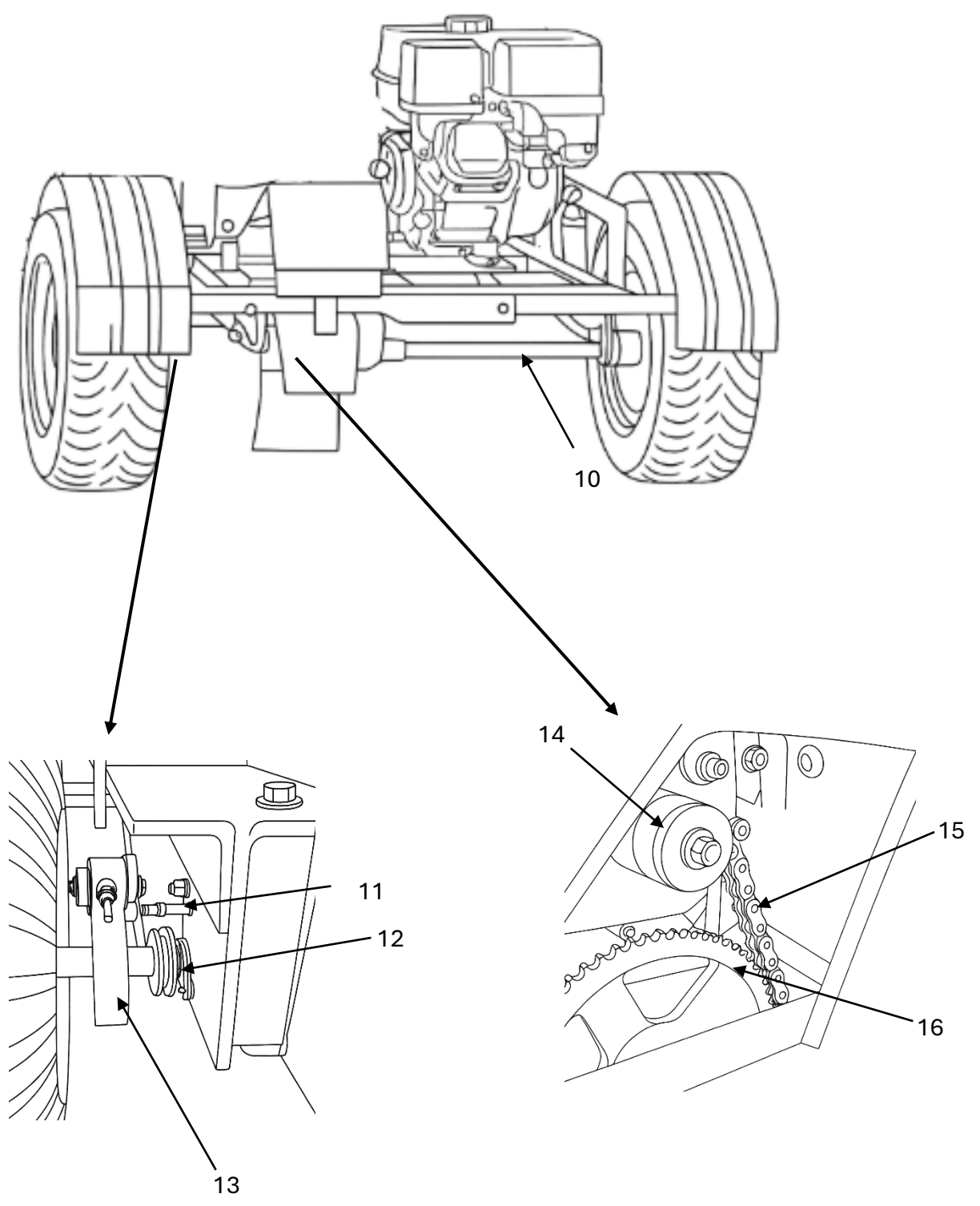
Drawing 1 – Spray assembly



Drawing 1 – spray assembly

No.	Part	Code	Price (£)
1	Spray Hose	719TK	16.58
2	Limit Plate	723TK	23.00
3	Wheel	N/A	N/A
4	Spray Housing	712TK	26.71
5	Union Nut	743TK	9.47
6	Trike Nozzle (brass)	87X	15.65
7	Spray Plate Bar	724TK	43.41
8	Spray housing Reducer	742TK	4.40
9	Spray bar stub	721TK	24.49

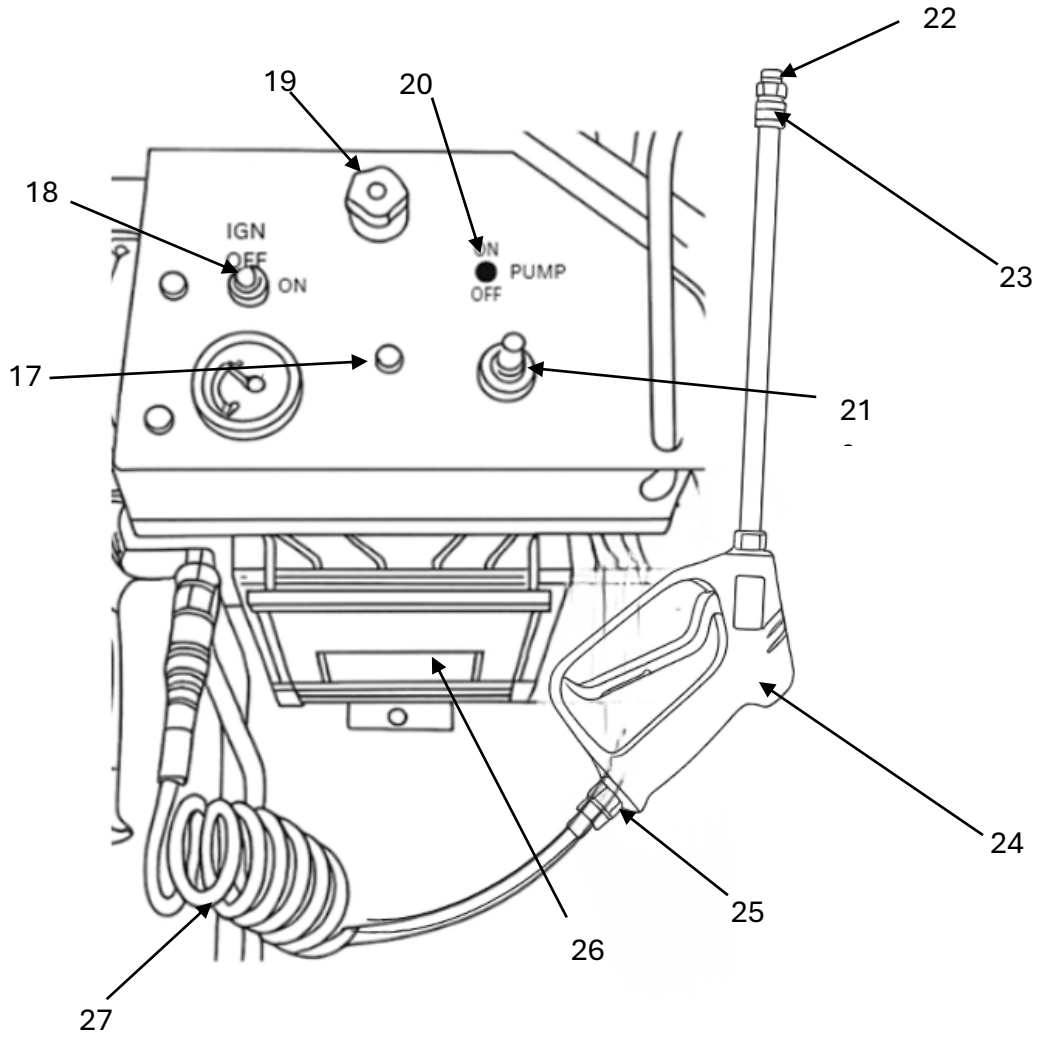
Drawing 2 – Engine & Axle



Drawing 2 – Engine & Axle

No.	Part	Code	Price (£)
10	Brake Drum Axle	748TK	93.50
11	Brake Rod	777TK	31.27
12	Brake Calliper	534TK	24.91
13	Brake Band	747TK	56.00
14	Top Sprocket	745TK	109.83
15	Duplex Chain	725TK	45.43
16	Bottom Sprocket	746TK	132.25

Drawing 3 – Control box & hand lance



Drawing 3 – Control Box & Hand lance

No.	Part	Code	Price (£)
17	Fuse Holder	733TK	7.57
18	Ignition Switch	729TK	25.60
19	Flow Control Valve	732TK	27.83
20	Pump Isolator switch	728TK	11.02
21	Battery Charger Socket	735TK	9.91
22	Hand Lance Nozzle	710TK	10.02
23	Nozzle Connector	72TK	4.25
24	Hand Lance Gun	706TK	90.00
25	Reducer (gun to coil)	56GM	1.80
26	Battery	512	95.00
27	Coil	707TK	45.00